



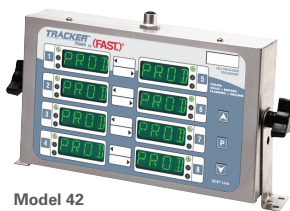
KITCHEN BRAINS

Driven by **(FAST)** Networked by **SCK**

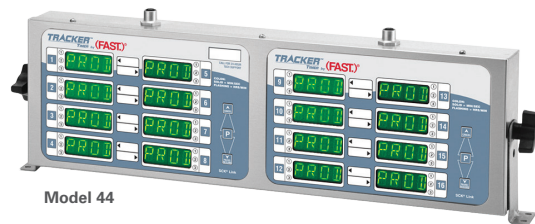
OPERATING GUIDE (ENGLISH/SPANISH)

TRACKER™ Multi-Display Timer

TRACKER™
TIMER



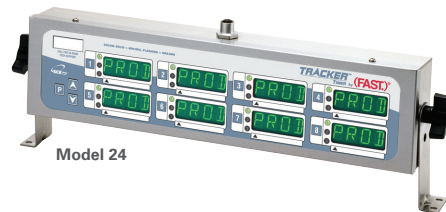
Model 42



Model 44



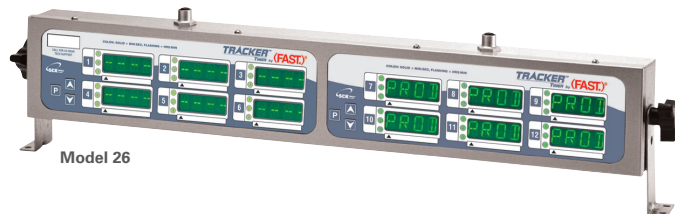
Model 23



Model 24



Model 81



Model 26



Model 28

Models 23, 24, 42, 81, 26, 28 & 44

Save the instructions
for future reference.
www.KitchenBrains.com

24/7 Toll-Free Technical Support
1-800-243-9271
(from the U.S., Canada and the Caribbean)

NOTICES

Before you start, please read entire manual.



Kitchen Brains is not liable for any use of product not in accordance with Kitchen Brains' installation and operation instructions.

TIMER OPERATING ENVIRONMENT

The solid state components in this timer are designed to operate reliably in a temperature range up to 158°F/70°C. Before installing this timer, it should be verified that the ambient temperature at the mounting location does not exceed 158°F/70°C.

CLEANING THE TIMER

Using a clean damp cloth, wipe down your timer daily using a commercial quality foodservice-approved detergent.

Do not allow oil to build up on any part of the timer.



NEVER use chemical or abrasive cleaners on your computer. The timer's overlay may be damaged.

NOTE

To clean the cap on the SCK® communication port, use a commercial ware washer.

Thank you for your purchase. In choosing Kitchen Brains, you have chosen a product with over 30 years of innovation and quality manufacturing behind it. The TRACKER™ Timer is designed to simplify your timing process and allow your foodservice operators to spend more time with the customers and other important responsibilities. Quality control of your food product is assured through the various features, notification displays and alarms designed into the TRACKER Timer.

There are two modes of operation on the timer:

- Operating Mode — used to time various menu items
- Product Programming Mode — used to add or modify menu items or change settings

This instruction booklet covers the following TRACKER Timer Models:

Model 23 with 6 displays

Model 24 with 8 displays

Model 42 with 8 displays

Model 81 with 8 displays

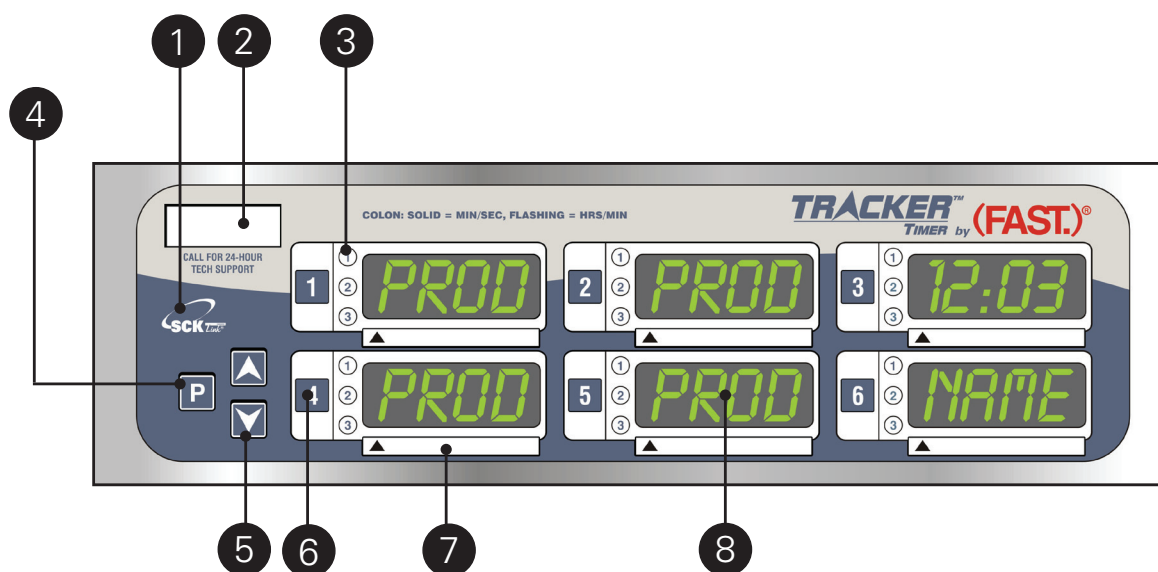
Model 26 with 12 displays

Model 28 with 16 displays

Model 44 with 16 displays

If any problems occur, or if you have any questions about the instructions, contact Kitchen Brains™ technical support toll-free at 1-800-243-9271.

TIMER KEY DESCRIPTIONS



- | | |
|---|---|
| 1 | COMMUNICATIONS CAPABILITY (SCK®): The TRACKER Timer is equipped with the patented communications capability known as SCK Link®. This timer is communications-capable. License and system components may be required. |
| 2 | SERVICEWINDOW: Locate the controller's serial number and tech support phone number easily. |
| 3 | MULTI-LIGHT DISPLAY: The TRACKER has three LEDs to show the status of each cook cycle. Up to three separate timing cycles per product key can be started by the operator. |
| 4 | PROGRAMMING KEY: In "Operating" mode allows access to the programming mode. In "Programming" mode, steps to the next function to be programmed. |
| 5 | UP and DOWN ARROW KEYS: In "Programming" mode increments the time or feature up or down. |
| 6 | PRODUCT KEY: In "Programming" mode used to program product cooking times. In "Operating" mode, used to start product timing cycles. |
| 7 | CHANGEABLE MENU STRIP: Easy to update when your menu items change. |
| 8 | ACROSS-THE-KITCHEN MONITORING: Easy-to-read displays allow crew members to quickly check the status of any food product from across the kitchen. The display will show the countdown or name of product. |

NOTE: The timer is in minutes/seconds mode when colon is lit solid. When the colon is flashing, the timer is in hours/minutes mode.

NOTE: The left and right sides of 12 and 16 Product TRACKERs operate independently.

OPERATING THE TIMER



Press to start

Start a Timing Cycle

To start a timing cycle, simply press the product key for the product you wish to cook.

If the product key is programmed for a count “down” mode, the total cooking time will be displayed **2:30** (example) and this time will immediately start to count down.

If programmed to count “up”, the display will read **0:00:00** and begin to count up.

The example display of “2:30” with solid colon is showing 2 minutes and 30 seconds.

A flashing colon denotes hours and minutes display. When the timing cycle is complete,

DONE

will be displayed and the timer will sound an audible alarm and visual signal.

If **DONE** is displayed immediately and the unit starts to signal, the key being operated does not have a programmed time.

Timing can be programmed up to 99 hours and 59 minutes. At 59 minutes and 59 seconds, the time will automatically switch to hours and minutes mode and the colon will flash.



Press to cancel

- **TO CANCEL A “DONE” SIGNAL**, press and hold the same product key used to start the timing cycle for 1 second.
- **TO CANCEL A CYCLE DURING COUNTDOWN**, press and hold the same product key used to start the timing cycle for 3 seconds.

Batch Cooking

Up to three (3) timing cycles per key can be activated at the same time. When each timing cycle is activated, the corresponding number next to the product key will light up.

Stage Timing

Each product key has five (5) timing stages. Each stage has:

1. A time cycle
2. Name for the stage
3. A cancel mode
4. An alarm time
5. A beep sound

Action Alarms (1 Per Key)

If the timer is programmed with action alarms, these alarms will signal at a preset

time during the timing cycle **:30** (for example). This audio signal, a dual rhythm

beeping, will last 5 seconds and then self-cancel, if so programmed. This signal will also

be accompanied by a visual indication on the timer. The timer then continues counting

towards **DONE**.

OPERATING THE TIMER

Holding Times

If the timer has holding times, they will automatically start counting upon expiration of the timing cycle.

When there is an active hold time, the display will toggle between

HOLD



1:00

(this is the time remaining in the hold cycle)

DISPLAY DESCRIPTIONS

The timer is in the Operating Mode and the timer is ready to start a timing cycle.

1:23

The timer is in the Operating Mode; a timing cycle is in progress. If the colon between the numbers is flashing, the timer is in minutes/seconds timing mode. If the colon is lit steady, the timer is in hours/minutes timing mode.

DONE

The timer is in the Operating Mode; a timing cycle has been completed.

HOLD

The timer is in the Operating Mode; a hold time is active, displaying hold number and time remaining in minutes, or a hold time has expired and hold time is displayed.

CANL

Choose between auto and manual canceling alarms.

PROG

The timer is in Programming Mode.

LOU 2

The timer is in Sound Level 2.

LIBR

Choose from a library of words.

WORD

Create a word by selecting letters.

BP

The timer is in Programming Mode for setting the alarm sound.

CT DOWN

The timer is in count down mode.

STAG TIME

The timer will count down each timing stage separately.

TRACKER TIMER FEATURES

Action Alarms (Per Key)

An action alarm is an indication to the user to perform some action at the programmed time. For example, you may want to shake a basket of breaded product during the timing process so they won't stick to each other. The green action alarm LED will flash for 5 seconds and then remain green until the timing cycle is complete.

Alarm Sounds — Six (6) Different

The TRACKER can be programmed for one of six (6) different alarm sounds.

Cancel Mode

The TRACKER timer offers a choice of manual or automatic canceling of each product stage.

Count Mode

The TRACKER offers a choice of two counting modes: up or down. The timer will count "up" from zero to the programmed done time, or "down" to zero from the programmed done time.

Hold Display

The timer will display the "hold" time (if active) when no timing cycles are active. The hold will automatically cancel if another product cycle is started on that key.

Hold Timer

A hold timer tracks the quality of a product through its holding period. The hold timer begins to count as soon as the timing cycle is completed. When the hold time expires an alarm sounds indicating any remaining product not sold should be discarded. This feature ensures a poor quality product is not served to your customer.

Multiple Timing Starts

Each TRACKER timer is capable of tracking up to three (3) timing cycles per product key. For example, an 8 key TRACKER timer has the capability to simultaneously time 24 products.

Power Loss Protection

In the event of a momentary power loss, the timer will resume its current operation from the point power was interrupted. Programmed recipes are always saved.

Stage Timing

Each product key has five (5) timing cycles called stages. Each stage has a time, name, cancel mode, alarm time and beep sound.

Volume Control — 3 Levels

The TRACKER can be programmed for one of three different volume levels: low (1), medium (2) or high (3).

PROGRAMMING THE TIMER

Entering Programming Mode



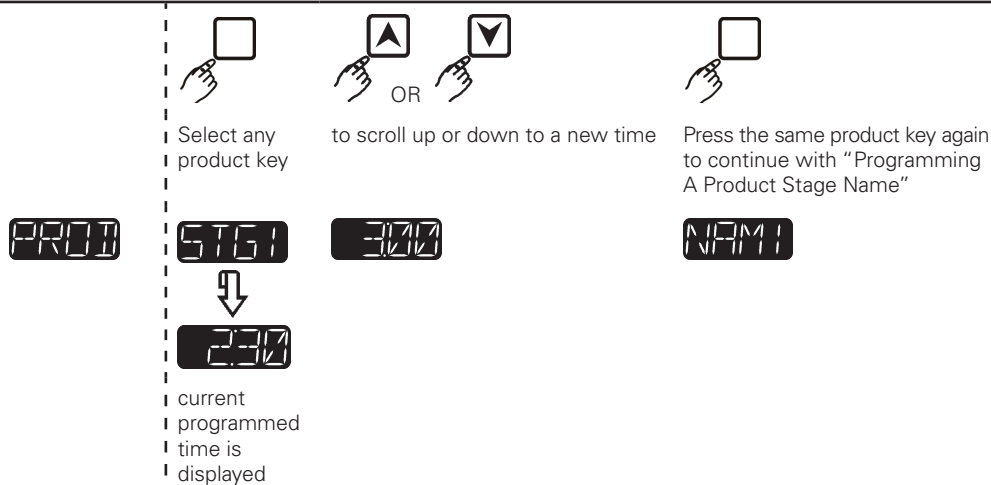
Press and hold for 3 seconds.



The timer is now in Product Key Programming Mode.

Programming A Product Stage Time

NOTE: Only one product key at a time can be programmed.



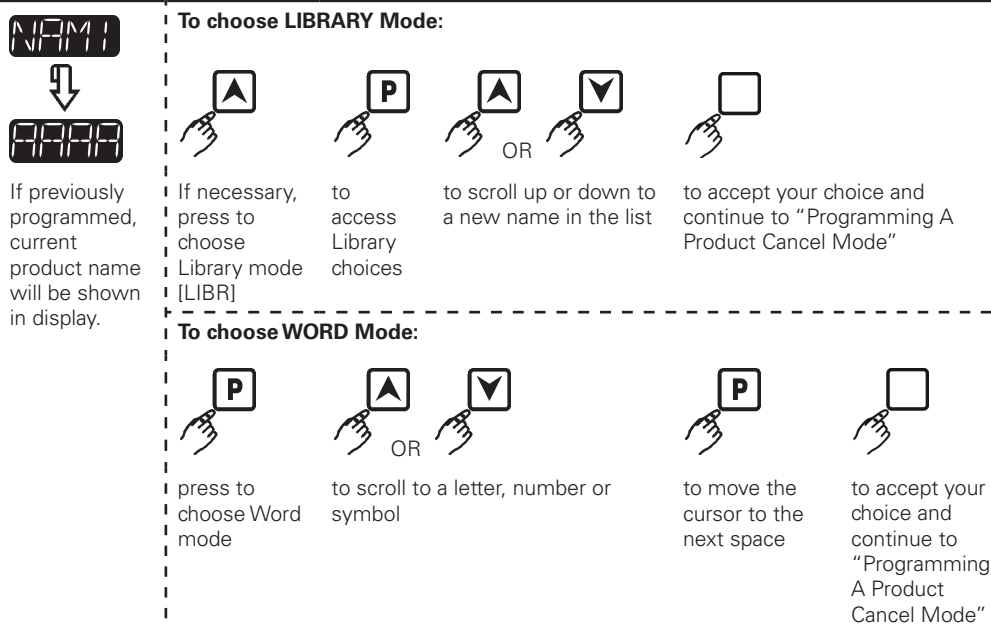
Programming A Product Stage Time

There are two modes: Library or Word.

LIBR Choose from a preloaded Library of product names.

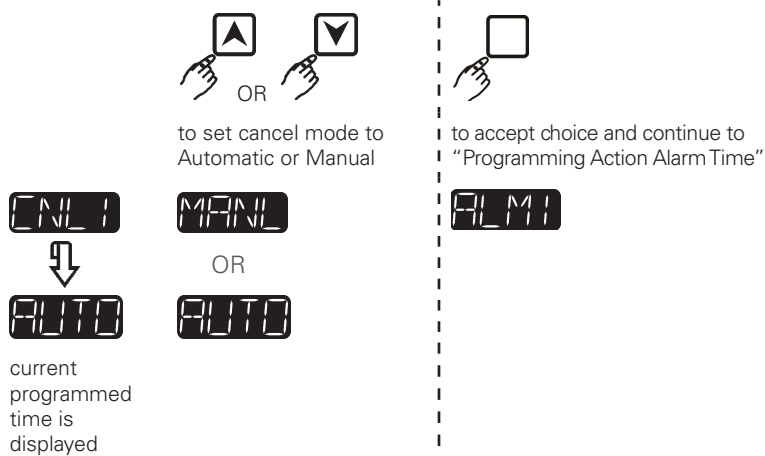
OR

WORD Create your own product name.

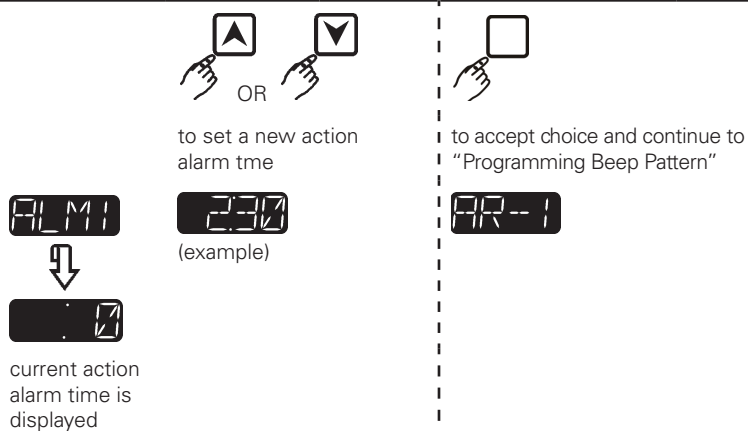


PROGRAMMING THE TIMER

Programming A Product Cancel Mode



Programming A Product Action Alarm Time



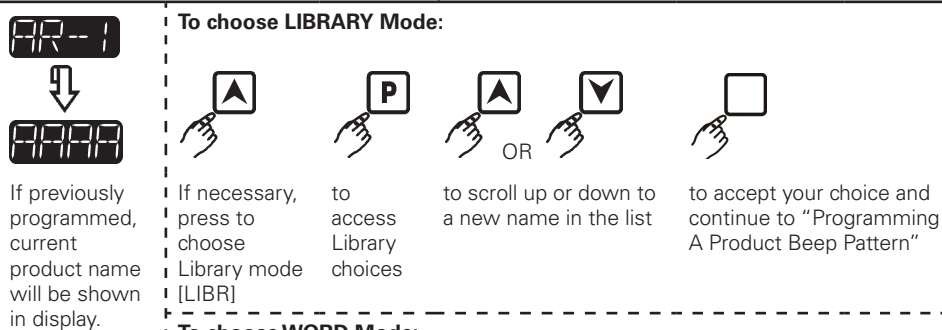
Programming An Action Alarm Name

There are two modes: Library or Word.

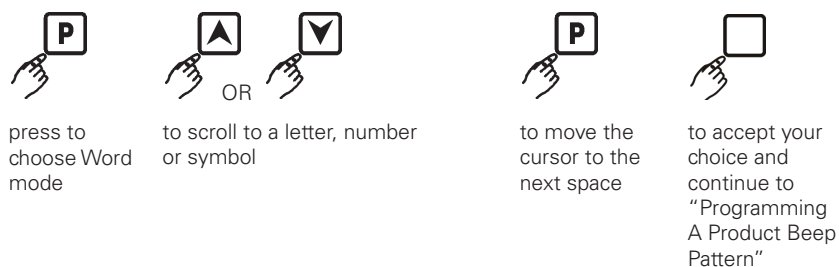
LIBR Choose from a preloaded Library of product names.

OR

WORD Create your own product name.

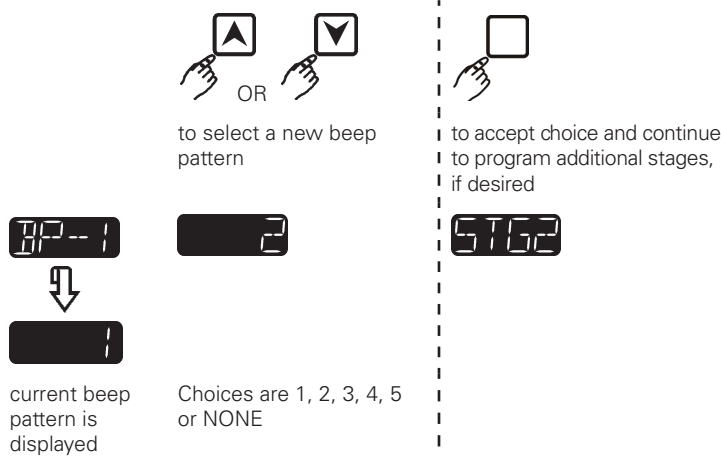


To choose WORD Mode:



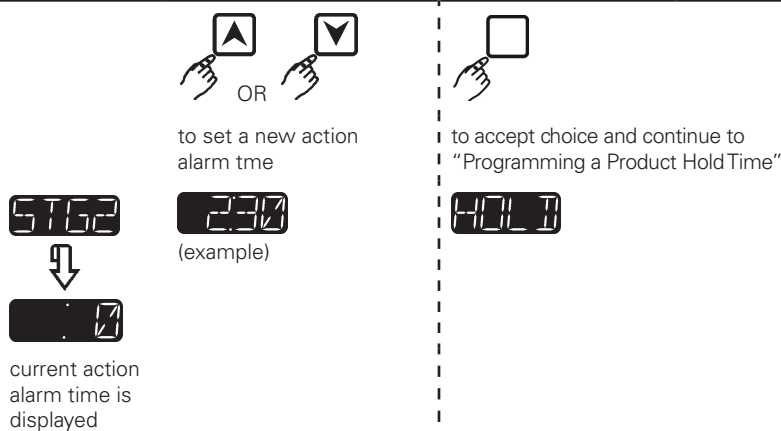
PROGRAMMING THE TIMER

Programming A Product Beep Pattern



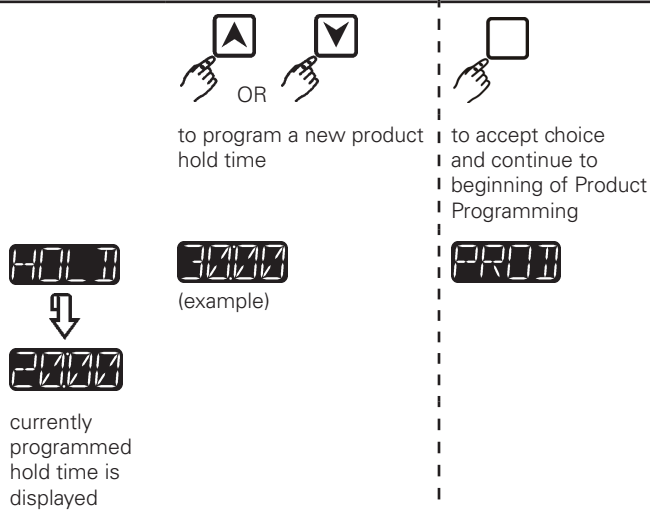
Programming Additional Stages

NOTE: Each product key can be programmed with up to five (5) stages. If no additional stages are required, set the time to zero, and press the product key to continue to "Programming A Product Hold Time"



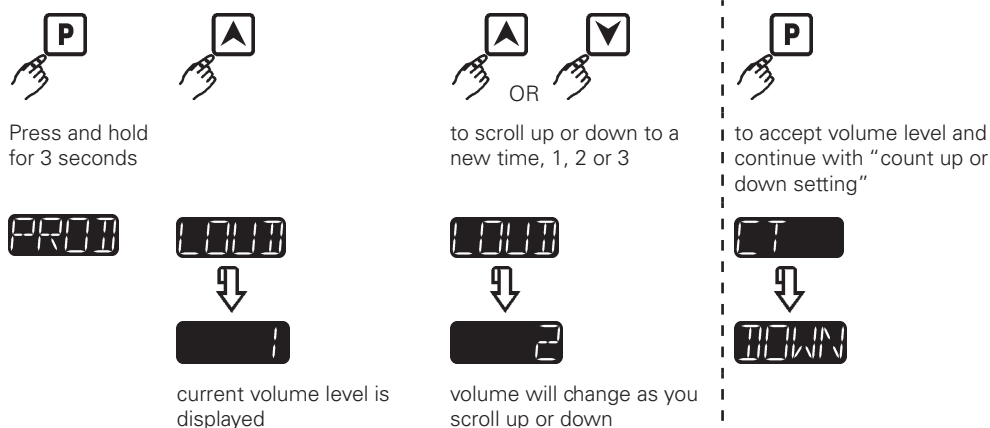
Programming A Product Hold Time

NOTE: If colon is on steady, time is in minutes/seconds. If colon is flashing, time is in hours/minutes.

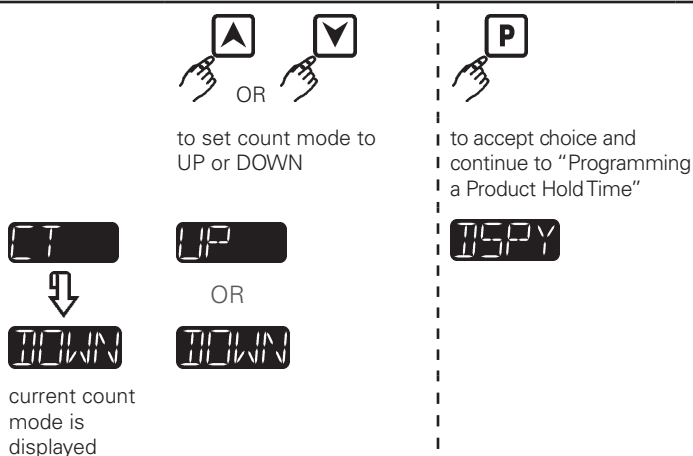


SYSTEM PROGRAMMING

Setting Volume Level



Setting Count Mode

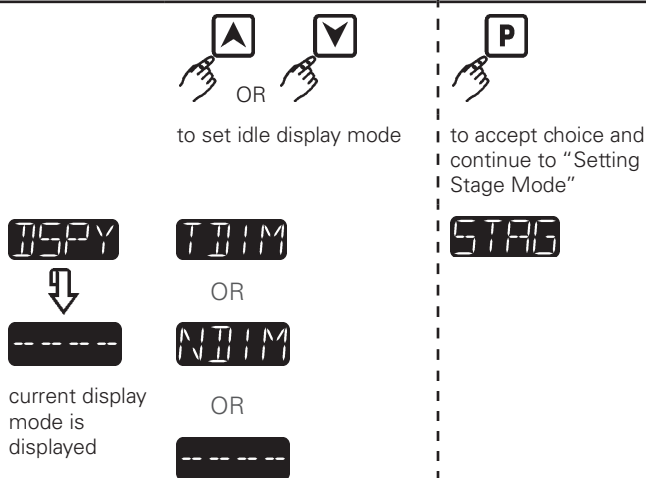


Setting Display Mode

TDIM: During idle, the currently programmed cycle 'time' will be dimmed in the display

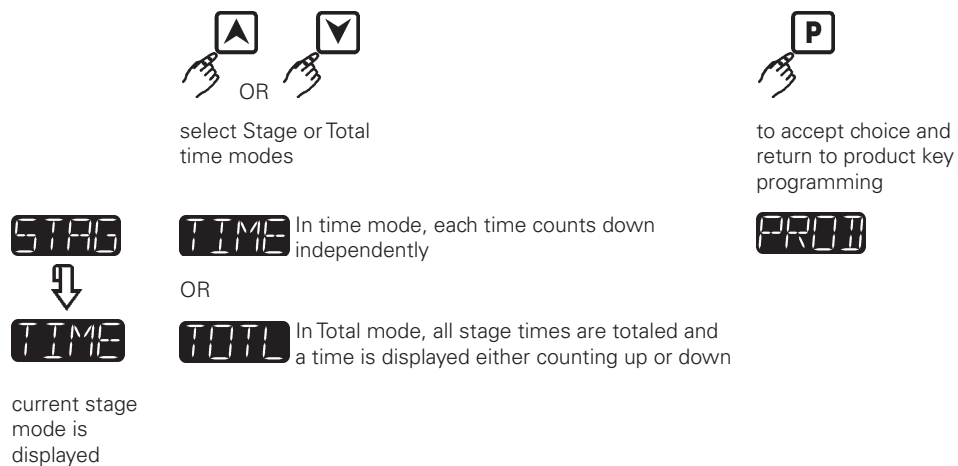
NDIM: During idle, the currently programmed cycle 'name' will be dimmed in the display. If no name is programmed, display will be blank.

---: During idle mode, the displays will show dashed lines.



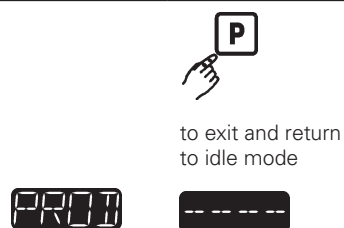
SYSTEM PROGRAMMING

Setting Stage Mode



Exit System Programming Mode

NOTE: You can only exit system programming when a key or keys have been completely programmed and all displays show [PROD].



CONNECTING TRACKER TO TRACKER

Setting Master to Master Communications

NOTE: Addresses shown are examples only.

Hold or Count Down time information can be communicated between two TRACKERs by hooking up a cable to each of the TRACKERs. This cable is available from Kitchen Brains (part number 141-15730).

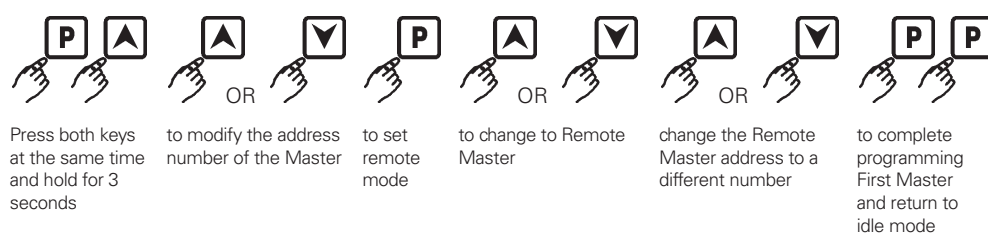
There are four (4) option modes for TRACKER to TRACKER communication: 1. Master to Master; 2. Master to Satellite; 3. Master to RQI; and 4. None

Master to Master

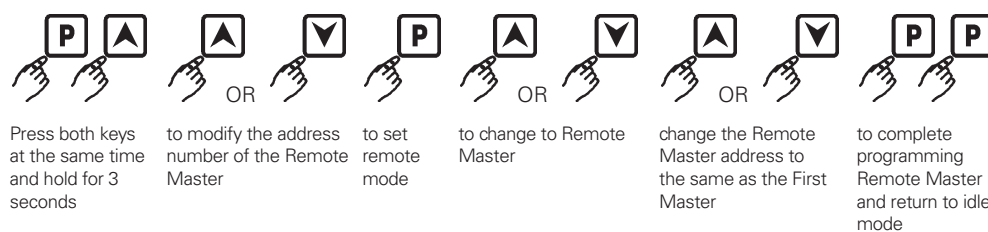
If both TRACKERs are set up for 'master to master', when a product key is pressed, one TRACKER time will display on the other TRACKER. Either TRACKER can cancel the timing cycle.

Example: Each TRACKER must be set to a different address. Set one TRACKER address to 1 and the other to 2. Address 1 is the Master and address 2 is the remote Master.

Programming the First Master



Programming the Second Remote Master



CONNECTING TRACKER TO TRACKER

Setting Master to Satellite Communications

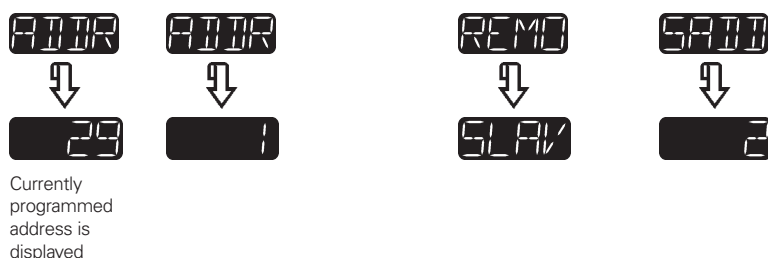
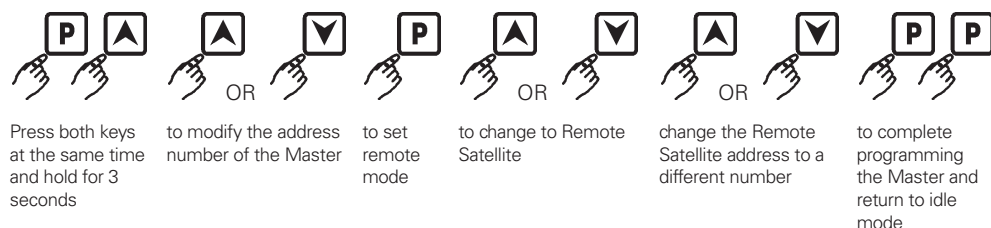
NOTE: Addresses shown are examples only.

Master to Satellite

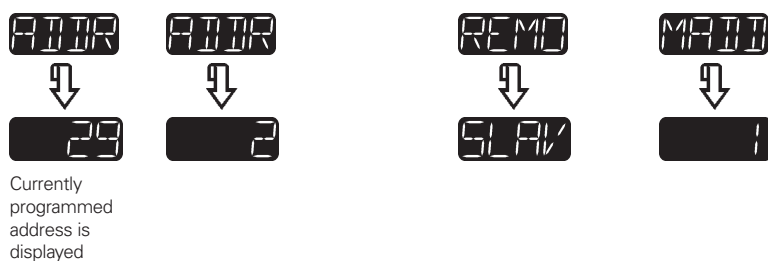
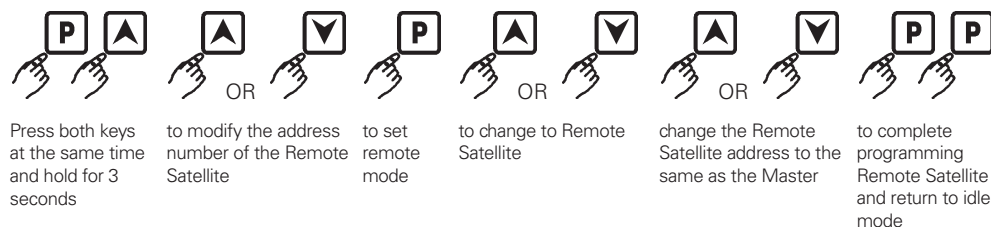
If one TRACKER is set as a satellite, the master will communicate only the hold time to the satellite. The satellite can operate normally, but no communication can be made from the satellite to the master.

Example: Set one TRACKER address to 1 and the other to 2. Address 1 is the master and address 2 is the satellite (1 is 'MADD 1' and 2 is 'SADD 2').

Programming the Master



Programming the Remote Satellite



CONNECTING TRACKER TO TRACKER

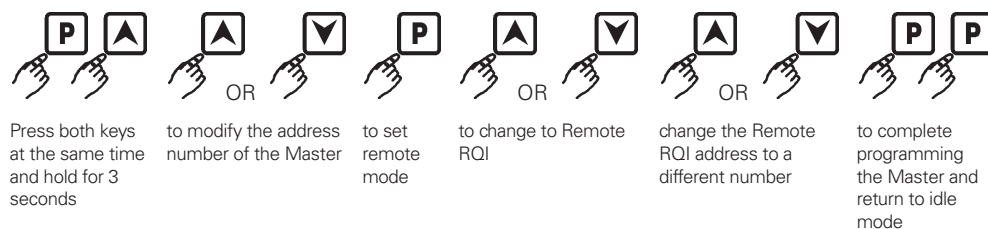
Setting Master to RQI Communications

NOTE: Addresses shown are examples only.

Master to RQI (Remote Quality Indicator)

An RQI is a small device that displays the hold time of a master only.

Programming the Master (No programming of the RQI units is necessary.)



Currently programmed address is displayed



NOTE: Options are QILA (left A), QILB (left B), QIRA (right A), and QIRB (right B). Each one should be set to a different number.

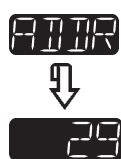
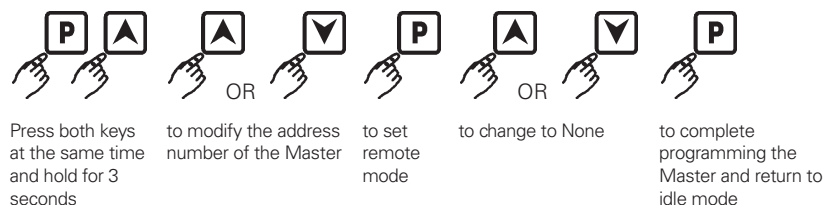
Setting Master to None

NOTE: Addresses shown are examples only.

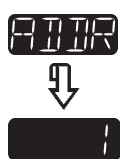
None

If none is selected, no communication in or out is made

Programming the Master



Currently programmed address is displayed



NOTES

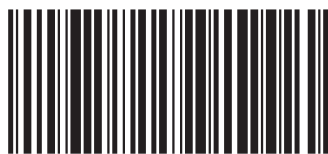
Want to learn more about Kitchen Brains™ products?

Visit our website:

www.KitchenBrains.com



SCK Link® is a registered trademark of Technology Licensing Corporation and use is subject to the appropriate license agreement.



229-51277



KITCHEN BRAINS

Driven by **(FAST)®** Networked by **SCK**

Food Automation - Service Techniques, Inc.

905 Honeyspot Road, Stratford, CT 06615-7147 USA

Phone: +1-203-377-4414

Sales: **1-800-FASTRON**

Fax: +1-203-377-8187

International Callers: +1-203-378-6860

www.KitchenBrains.com

Toll-free technical support 24/7 from the U.S.,

Canada, and Caribbean: **1-800-243-9271**

International offices are located in the United Kingdom, China and Singapore:

Europe, Middle East, Africa, South Asia
31 Saffron Court Southfields Business Park
Basilidon, Essex SS15 6SS ENGLAND
Phone: +44 0 1268544000

Asia Pacific
1803, 18F, No 922 Hengshan Rd
Shanghai 200030, CHINA
Phone: +8613916 854 613

15-101, Block 290G, Bukit Batok St. 24
SINGAPORE 65629
Phone: +65 98315927

Customer Service and Technical Assistance

Our customer service department is available for orders and questions Monday through Friday between the hours of 8 AM and 5 PM EST. Call us toll-free at **1-800-FASTRON (800-327-8766)** if you're in the US, Canada or the Caribbean, or at **203-378-6860** if you're outside of these areas.

Toll-free technical assistance is available 24 hours a day, 365 days a year by calling **1-800-243-9271** (from the U.S., Canada and the Caribbean) when help is needed immediately.

You can also send an instant email message to a Kitchen Brains™ technician, Monday through Friday, 8am-5pm EST, by going to www.KitchenBrains.com, selecting the 'Support' link at the top of the page, and clicking on 'Contact Tech Support.'

Free Program for Service Exchanges

Kitchen Brains provides an Exchange Program, at no extra cost, if a unit should fail. In the event of failure, you have the option of (1) receiving a replacement product from our factory, freight prepaid; (2) exchanging the failed product for a replacement product at one of our authorized local service centers; or (3) selecting on-site repair or replacement of the failed unit by one of our authorized local service centers.

To take advantage of this program, simply call our toll-free customer service number, **1-800-243-9271**. If you elect to receive an exchange unit from the factory, a replacement unit will be sent immediately. Upon receipt of the replacement unit, simply return the failed unit to the factory, freight prepaid, using the same carton and packing material in which the replacement unit was shipped. The unit will be replaced free of charge, if still under warranty, and if the product shows no evidence of abuse or alteration. If the unit is not under warranty, you will pay repair charges and shipping costs to and from the factory.

Any minor adjustment or calibration and any labor costs for the replacement of probes will be made at your expense.

The Kitchen Brains™ Exchange Program is available to any Domestic Customer whose account is current, and applies to all Kitchen Brains™ Timers, Computers and Controllers.

WARRANTY

Kitchen Brains warrants all new timers, computers, and controllers for 1 year from the date of purchase including computers, controllers, and timers. Kitchen Brains warrants all other items for a period of 90 days unless otherwise stated at the time of purchase.

PATENTS

The products manufactured by Kitchen Brains are protected under one or more of the following U.S. Patents:

| | | | |
|-----------|-----------|-----------|-----------|
| 5,331,575 | 5,539,671 | 5,711,606 | 5,723,846 |
| 5,726,424 | 5,875,430 | 6,142,666 | 6,339,930 |
| 6,401,467 | 6,581,391 | 7,015,433 | 7,650,833 |
| 7,877,291 | 8,060,408 | | |

Plus foreign patents and patents pending. Plus licensed patent 5,973,297